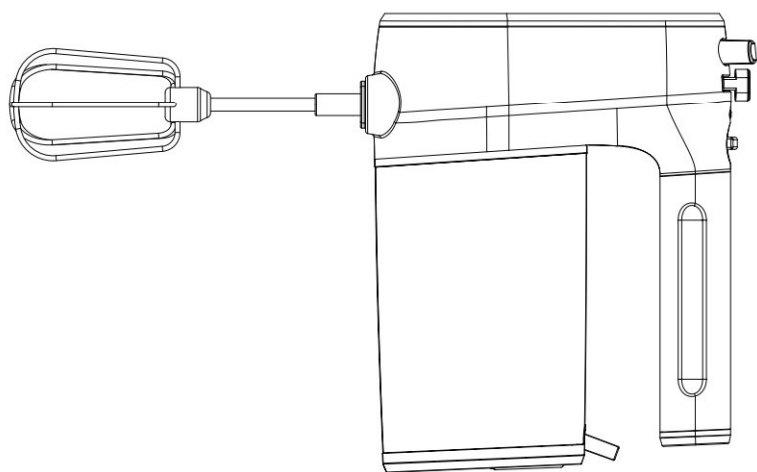


Mixer

User Manual



HMM7350DX

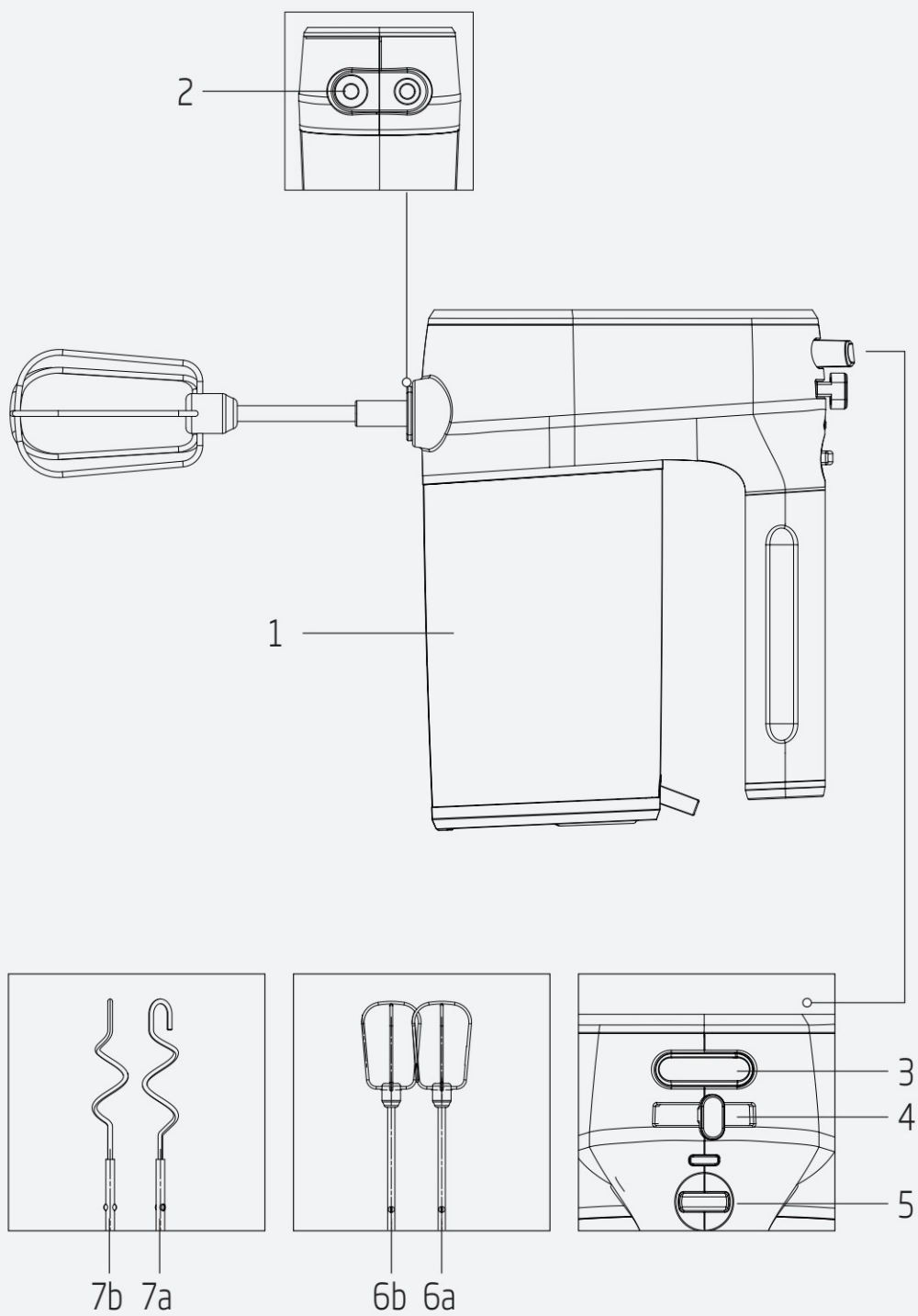
EN	DE	FR	TR
PL	RO	IT	SR

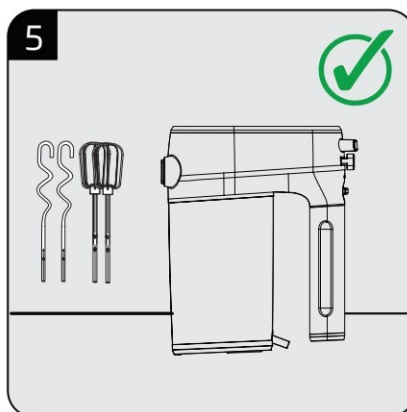
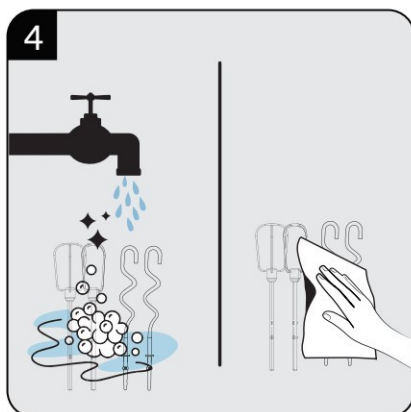
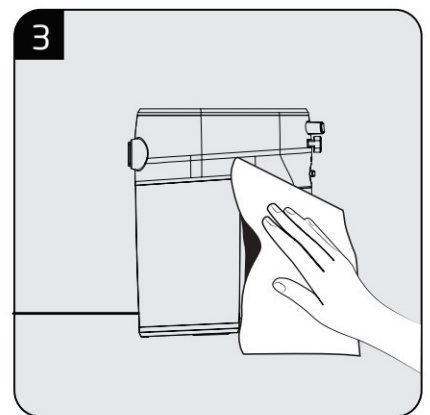
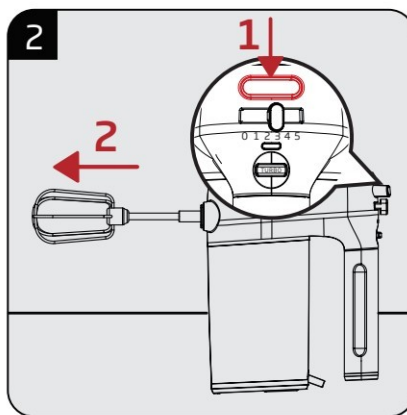
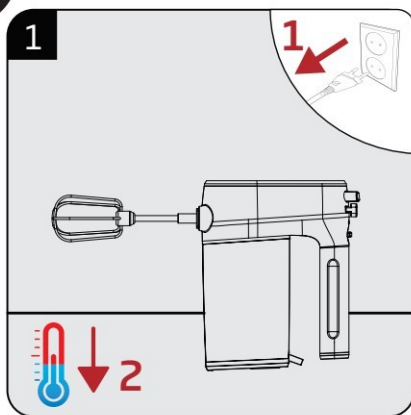
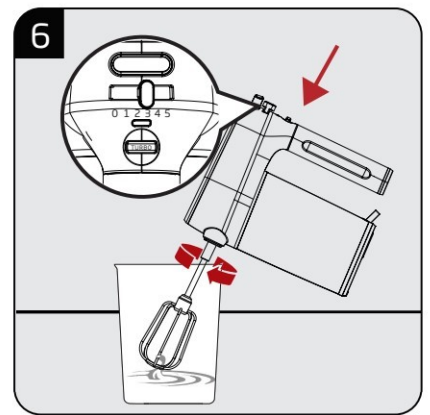
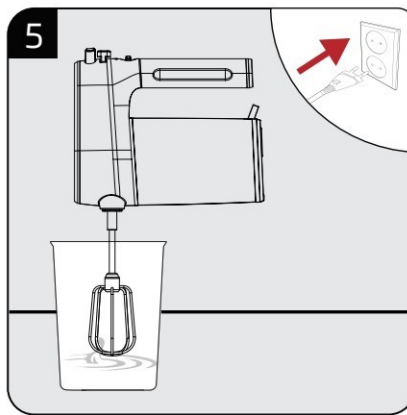
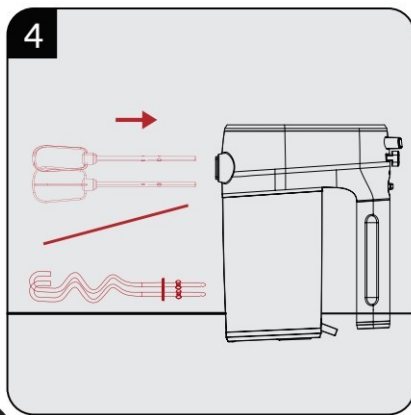
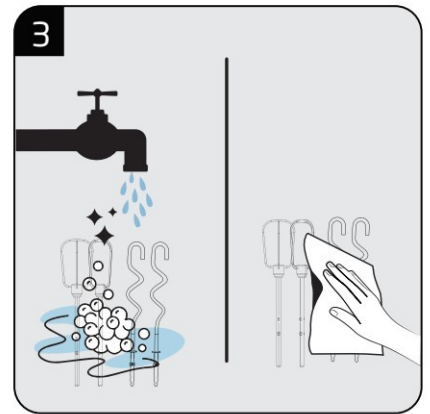
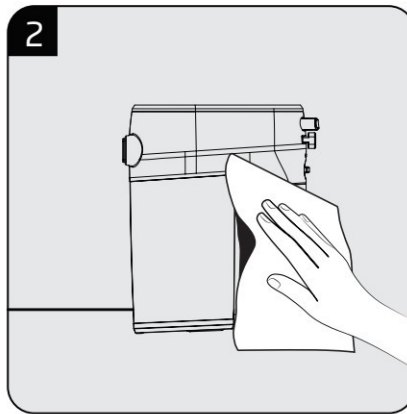
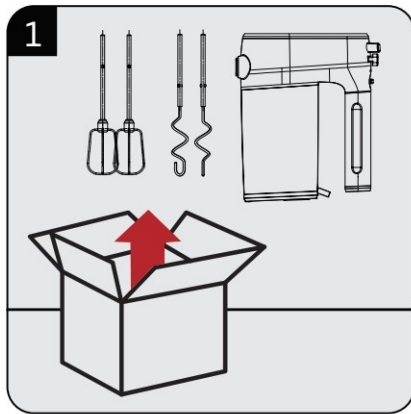
01M-8816083200-2619-02




CONTENTS

ENGLISH	8-14
DEUTSCH	15-24
FRANÇAIS	25-34
TÜRKÇE	35-43
POLSKI	44-54
ROMANIAN	55-65
ITALIANO	66-75
СРПСКИ	76-84





		
EN	OPERATION	CLEANING AND CARE
DE	BETRIEB	REINIGUNG UND PFLEGE
FR	FONCTIONNEMENT	NETTOYAGE ET ENTRETIEN
TR	KULLANIM	TEMİZLEME VE BAKIM
PL	OBSŁUGA	CZYSZCZENIE I KONSER- WACJA
IT	UTILIZZO	PULIZIA E CURA
RO	UTILIZARE	CURĂ AREA ȘI ÎNGRIJIREA
SR	UKLOVANJE	ČIŠĆENJE I ODRŽAVANJE
AR	التشغيل	التنظيف والعناية



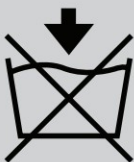

Please read this user manual first!

Dear Customer,

Thank you for preferring a Beko product. We hope that you get the best results from your product which has been manufactured with high quality and state-of-the-art technology. Therefore, please read this entire user manual and all other accompanying documents carefully before using the product and keep it as a reference for future use. If you handover the product to someone else, give the user manual as well. Follow all warnings and information in the user manual.

Meanings of the symbols

Following symbols are used in the various section of this manual:

	Important information and useful hints about usage.
	WARNING: Warnings for dangerous situations concerning the safety of life and property.
	Do not immerse the appliance in water.
	Protection class for electric shock.



This product has been produced in environmentally-friendly, state-of-the-art facilities.

This appliance conforms to the WEEE regulation.



It does not contain PCB.
Made in P.R.C

1. Motor unit
2. Accessory slots
3. Accessory release button
4. Operation and speed adjustment button
5. TURBO Button
6. Whiskers (6a/6b)
7. Dough kneading spirals (7a/7b)

Technical data

Voltage: 220-240V ~ 50/60Hz

Power: 350 W

Technical and design modifications reserved.

The values which are declared in the markings affixed on your product or the other printed documents supplied with it represent the values which were obtained in the laboratories pursuant to the pertinent standards. These values may vary according to the usage of the appliance and ambient conditions.

1 Important safety and environmental instructions

This section contains safety instructions that will help protect from risk of personal injury or property damage.

Failure to follow these instructions invalidates the granted warranty.

1.1 General safety

- This appliance complies with the international safety standards.
- This appliance can be used by people who have limited physical, sensory or mental capacity or who do not have knowledge and experience, provided that they are supervised or they understand the instructions with regard to safe use of the product and potential dangers.
- This appliance cannot be used by children.
- Keep the appliance and the power cable out of the reach of children.
- Do not use it if the power cable or the appliance itself is damaged. Contact an authorised service.

1 Important safety and environmental instructions

- Unplug the appliance when left unattended, while installing/removing accessories or before cleaning.
- Only use the original parts or parts recommended by the manufacturer.
- Do not attempt to dismantle the appliance.
- Your mains power supply should comply with the information supplied on the rating plate of the appliance.
- Do not use the appliance with an extension cord.
- Do not pull the power cable when unplugging the appliance.
- Unplug the appliance before cleaning, disassembly, accessory replacement and wait for it to stop completely.
- Do not touch the plug of the appliance with damp or wet hands.
- Do not use the device for hot food.
- Remove bones and stones from food to prevent the the appliance from getting damaged.
- This appliance is not suitable for dry or hard foods.

1 Important safety and environmental instructions

- To prevent overheating, do not use mixing with spirals continuously for more than 2 minutes. Leave to cool for 1 minute in between each 2 minutes of operation.
- Follow all warnings to prevent injuries due to incorrect use.
- After cleaning, dry the appliance and all parts before connecting it to mains supply and before attaching the parts.
- Do not immerse the appliance, power cable, or power plug in water or any other liquids.
- Do not operate or place any part of this appliance or its parts on or near hot surfaces.
- If you keep the packaging materials, store them out of the reach of children.
- If you keep the packaging materials, store them out of the reach of children.

1 Important safety and environmental instructions

1.2 Compliance with the WEEE Directive and Disposing of the Waste Product:

This product complies with EU WEEE Directive (2012/19/EU). This product bears a classification symbol for waste electrical and electronic equipment (WEEE).

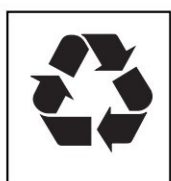


This symbol indicates that this product shall not be disposed with other household wastes at the end of its service life. Used device must be returned to official collection point for recycling of electrical and electronic devices. To find these collection systems please contact to your local authorities or retailer where the product was purchased. Each household performs important role in recovering and recycling of old appliance. Appropriate disposal of used appliance helps prevent potential negative consequences for the environment and human health.

1.3 Compliance with RoHS Directive

The product you have purchased complies with EU RoHS Directive (2011/65/EU). It does not contain harmful and prohibited materials specified in the Directive.

1.4 Package information



Packaging materials of the product are manufactured from recyclable materials in accordance with our National Environment Regulations. Do not dispose of the packaging materials together with the domestic or other wastes. Take them to the packaging material collection points designated by the local authorities.

2 Operation

2.1 Intended use

This appliance is intended only for household use; it is not suitable for professional use.

2.2 Whisking / Blending



WARNING:

- Do not use whisker accessory together with mixer spirals.
- Place the container to be used for processing on a stable and flat surface.
- Speed levels range between 1-5. Increase speed by starting with level 1.
- Set the speed adjustment button to "0" position when processing is over.
- When operation button is in "0" position, you can press accessory release button to release whisker and mixer accessories.



Start mixing in low speed while mixing ingredients. Ingredients may be spattered when you start with high speed.

2.3.1 Whiskers

- Always use both whiskers.
- Teflon-coated pots can be scratched.
- Use for whisking liquid ingredients such as cakes, sauces, soup.

2 Operation

2.3.2 Mixer spirals

- Always use both mixer spirals.
- Teflon-coated pots can be scratched.
- Use to knead dough.

2.4 TURBO button

When you need extra high speed, press and hold TURBO button and release when you do not need.



WARNING: Do not use TURBO feature for more than 1 minute.

3 Cleaning and care

3.1 Cleaning



WARNING:

- Never use gasoline, solvent, abrasive cleaning agents, metal objects or hard brushes to clean the appliance.
- Whiskers and kneading spirals are dishwasher safe.

3.2 Storage

- If you do not intend to use the appliance for a long time, store it carefully.
- Unplug the appliance before lifting it.
- Store the appliance in a cool and dry place.
- Keep the appliance and cable out of the reach of children.

3.3 Handling and transportation

- During handling and transportation, carry the appliance in its original packaging. The packaging of the appliance protects it against physical damages.
- Do not place heavy loads on the appliance or the packaging. The appliance may be damaged.
- Dropping the appliance may render it non-operational or cause permanent damage.

Bitte lesen Sie zuerst diese Anleitung!

Werter Kunde:

Danke, dass Sie sich für ein Produkt der Marke Beko entschieden haben. Wir hoffen, dass Sie mit diesem Produkt, das mit den höchsten Qualitätsanforderungen und der modernsten Technologie hergestellt wurde, beste Ergebnisse erzielen. Bitte lesen Sie die gesamte Bedienungsanleitung und alle anderen Begleitdokumente aufmerksam, bevor Sie das Produkt verwenden; bewahren Sie sie zum künftigen Nachschlagen sicher auf. Wenn Sie das Produkt an einen Dritten weitergeben, händigen Sie bitte auch diese Anleitung aus. Befolgen Sie alle Warnhinweise und Informationen in dieser Anleitung.

Symbole

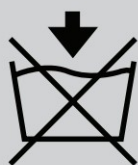
Folgende Symbole werden in verschiedenen Abschnitten dieser Anleitung verwendet:



Wichtige Informationen und nützliche Tipps zur Verwendung.



WARNUNG: Warnhinweise zu gefährlichen Situationen im Hinblick auf die Sicherheit von Leib, Leben und Eigentum.



Gerät nicht in Wasser tauchen.



Schutzklasse gegen Stromschläge.



Dieses Produkt wurde in umweltfreundlichen, hochmodernen Einrichtungen hergestellt

Dieses Gerät erfüllt die WEEE-Richtlinie.



Es enthält kein PCB.
Hergestellt in: P.R.C.